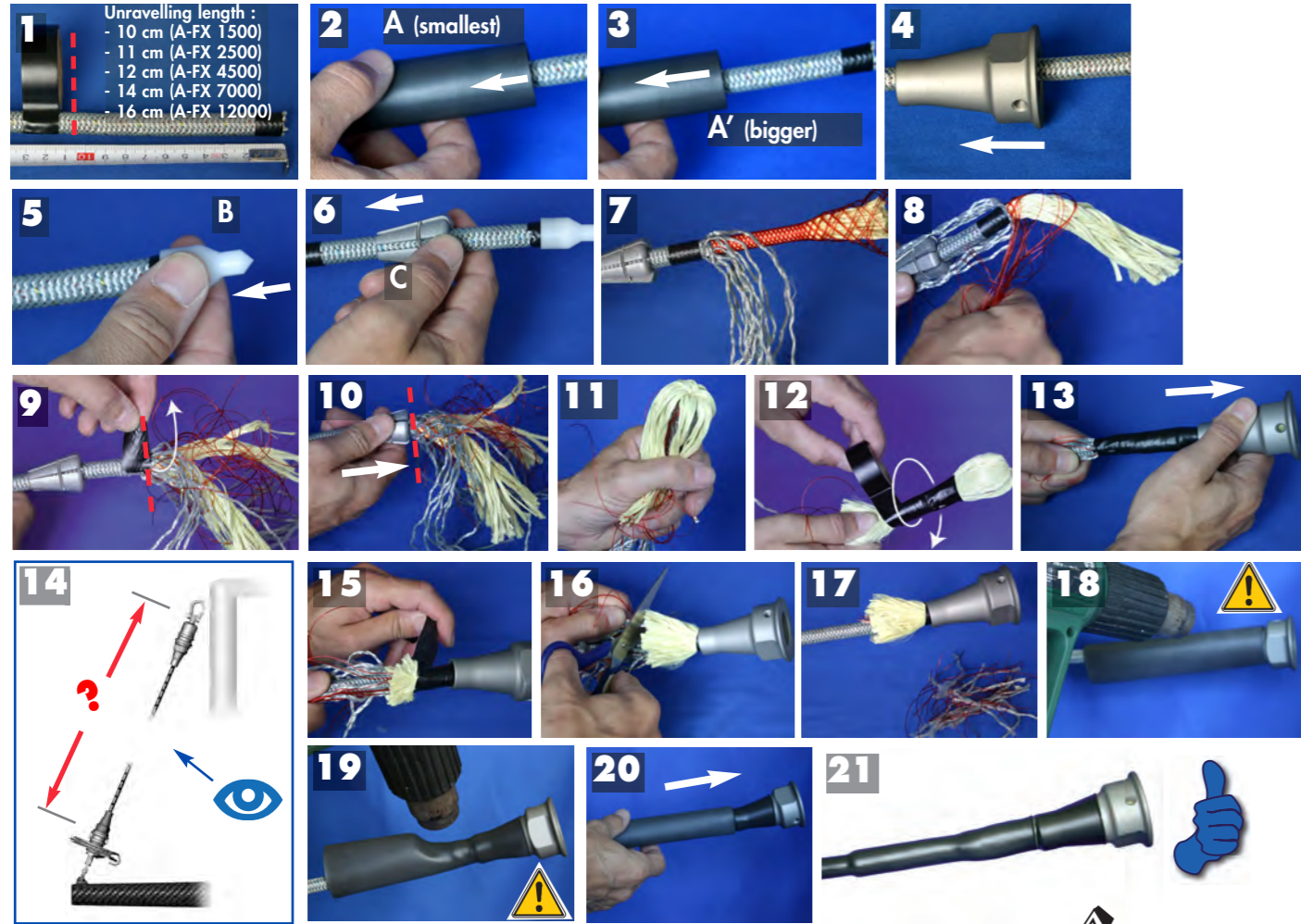




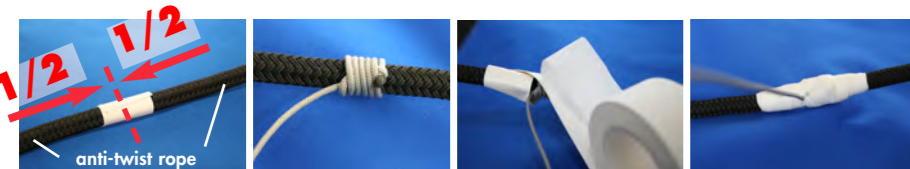
8. CONNEXION OF THE LUFF ROPE ONTO MECHANISM TERMINALS

Follow the steps below. Slide in order: shrinkable sleeves (x2), terminal, cap, split cone. Before the step 15, check on board the pre-fitting by screwing the terminals onto the mechanisms (chap 10) and tightening the halyard in order to perfectly settle the cone/luff rope/mechanism assembly.



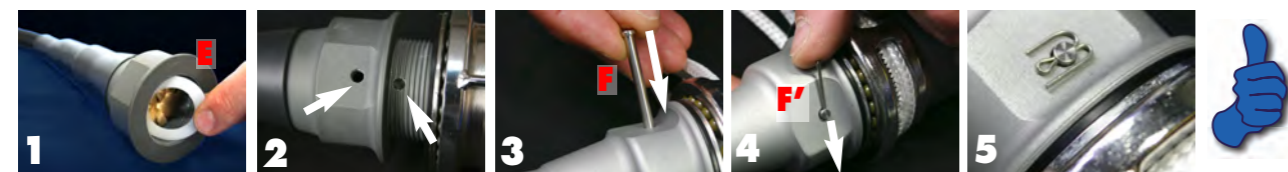
9. CENTRAL FURLING LINE

Tie securely the central line onto the luff rope (previously taped position) in the middle or slightly higher according to the asymmetric Spinnaker shoulder. Secure the central line knot with auto-vulcanising tape. See tip below.

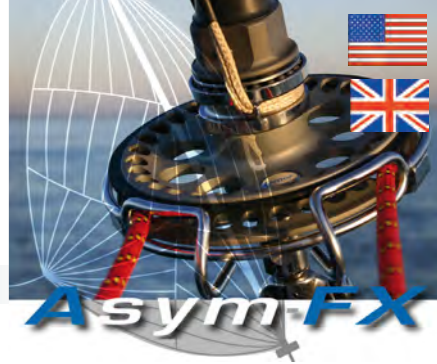


In order to reduce the number of turns of the central line, you can fit round the central line taped knot along 1 to 3 meters (depending on AFX models) either a thick flexible sleeve (not included) or tie knots settled with shrinkable sleeves.

10. FIXING THE TERMINAL ONTO THE MECANISM : Adjust the nylon ring rep E inside the terminal (fig.1). Screw the terminal onto the mechanism until it touches the black plastic ring, make sure holes are aligned (fig.2). Slide the crossing pin rep F inside the aligned holes (fig.3), then secure the pin with the delivered split pin rep F' (fig 4), bent the legs of the split pin until to form an angle as shown (fig 5).

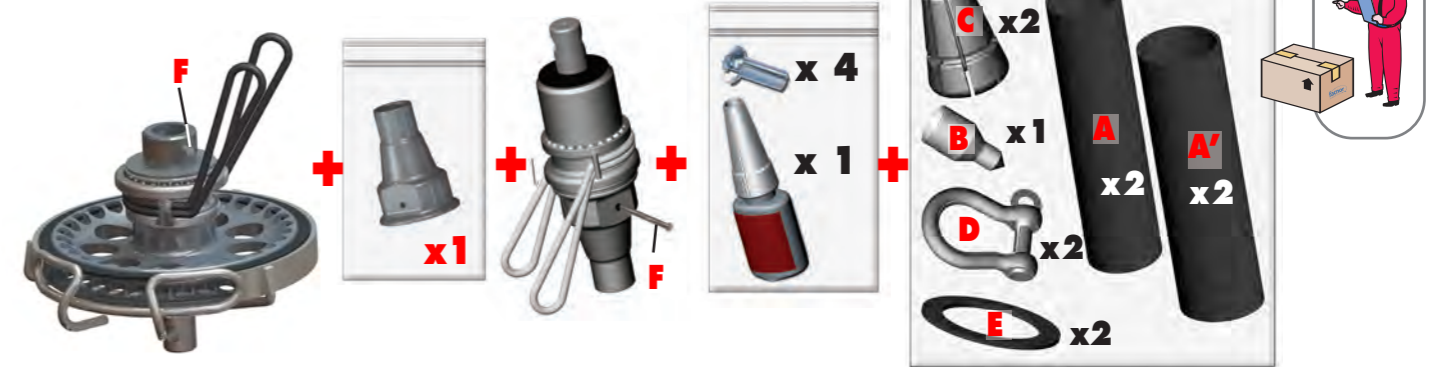


If you have queries, please do not hesitate to contact our sales team or any of dealer : :
info@facnor.com // www.facnor.com



1-BOX CONTENT (to be checked upon reception)

Standard Kit

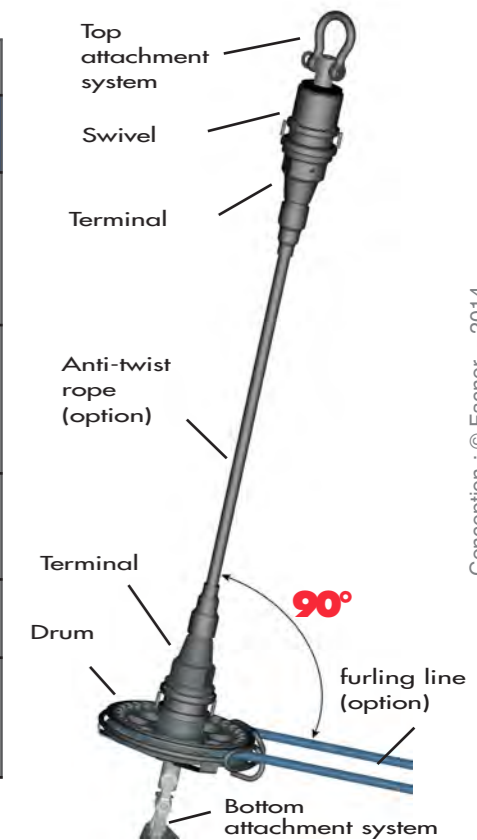


+ 2 Types of attachments (top+bottom)*:

STANDARD KIT TYPES OF ATTACHMENTS					
Furler Model	AsymFX 1500	AsymFX 2500	AsymFX 4500	AsymFX 7000	AsymFX 12000
Bow shackle	x 1	x 1	x 1	x 1	x 1
Textile shackle	-	-	option available	x 1	x 1
Snapshackle	x 1	x 1	x 1	option available	-

SHRINKABLE SLEEVES			
AsymFX model	A & A' (quantity - ø - length)		
	Qty	ø (mm)	ø (inches)
1500	4	Ø 24 x 150 mm	ø15/16 x 6"
2500	2	Ø 24 x 150 mm	ø15/16 x 6"
	2	Ø 32 x 150 mm	ø 1"1/4 x 6"
4500	2	Ø 32 x 150 mm	ø 1"1/4 x 6"
	2	Ø 39 x 150 mm	ø 1"9/16 x 6"
7000	2	Ø 39 x 150 mm	ø 1"9/16 x 6"
	2	Ø 48 x 160 mm	ø1"7/8 x 6,3"

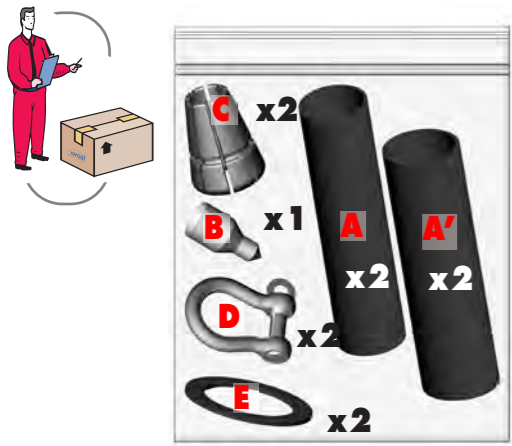
OPTIONS					
Furler Model	AsymFX 1500	AsymFX 2500	AsymFX 4500	AsymFX 7000	AsymFX 12000
Extra blocks (for 2-to-1 swivel or drum)	-	FB60	FB70	FB90	FB110
Friction blocks	SSH 1500	SSH 1500	SSH 4500	SSH 7000	on request
Anti-twist rope (length on request)	ø 9 3/8	ø 11 7/16	ø 13 1/2	ø 16,5 5/8	ø 19 3/4
Spliced furling line ø and length	ø 6 mm 1/4	ø 8 mm 5/16	ø 8 mm 5/16	ø 10-12 mm 13/32 - 1/2	ø 10-12 mm 13/32 - 1/2
	x 12 m 39' or x 16 m 52'	16 m 52' or 20 m 65'	16 m 52' or 20 m 65'	x 32 m 105'	Tailor made



Conception : © Facnor - 2014

1-BOX CONTENT (to be checked upon reception)

FX ADAPTATION for a Asym-FX:



Shrinkable sleeves : see chart page 1



FX / Asym-FX assembly: see chapter 10
(Fixation of the anti-twist rope on to furler mechanisms).

2. BLOCKS FITTINGS (SHEAVE OR FRICTION VERSIONS) :



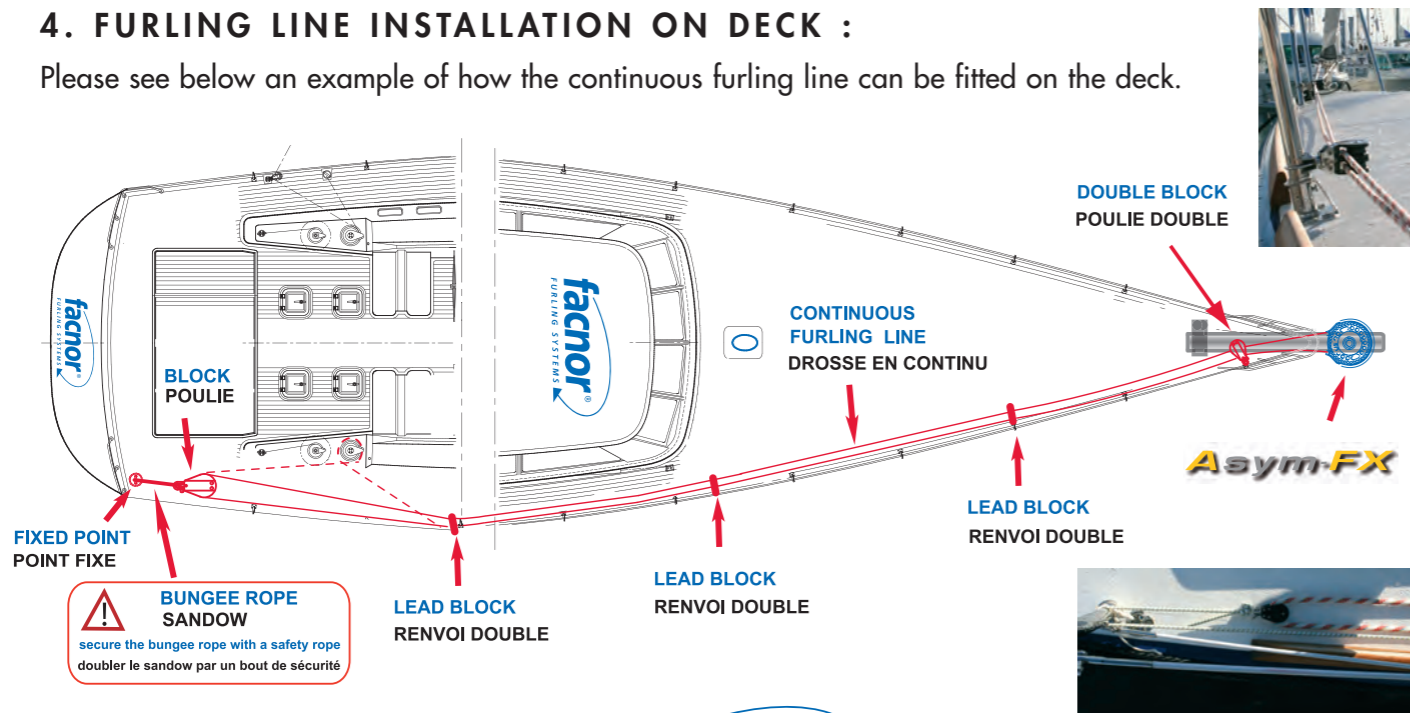
3. MAXIMUM LOADS :

! The names of the AFX models do not indicate any breaking loads but the possible adaptation with FX furlers accessories.

Model	AsymFX 1500	AsymFX 2500	AsymFX 4500	AsymFX 7000	AsymFX 12000
Max. loads in the anti-twist rope (Kg)	250 Kg	500 Kg	900 Kg	1500 Kg	-

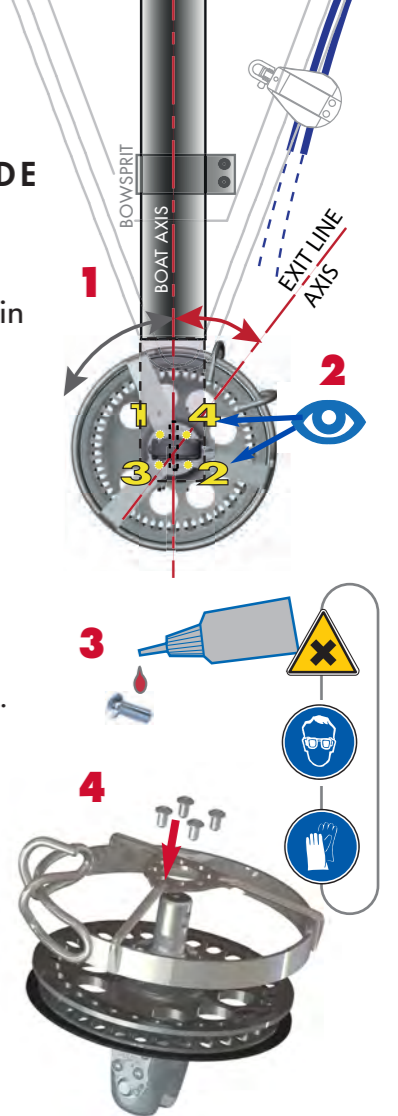
4. FURLING LINE INSTALLATION ON DECK :

Please see below an example of how the continuous furling line can be fitted on the deck.



5 - ORIENTATION AND FIXATION OF THE FURLING GUIDE

- 1 : ORIENTATE THE FURLING GUIDE AND SPOT**
Fit temporarily the bottom attachment on the chain plate.
Spot how the furling guide needs to be orientated to enable correct furling in and out.
- 2: MARK**
Mark underneath the guide in which holes you will screw.
- 3: PREPARE THE FURLING LINE GUIDE**
Remove grease with an appropriate product from the thread of the screws and from the holes. Put a few drops of supplied glue round the thread of each provided screws.
- 4: FIX THE FURLING GUIDE**
Introduce the 4 screws into the previously marked holes and quickly tighten. Remove any residual glue.



! Warning: Operate in a ventilated place. Protect your skin and eyes (in case of contact with the provided products, please follow instructions stipulated on notes enclosed). These products can be irritant, toxic and polluting. Threw away any packaging in an appropriate place.

6 - INSTALLATION OF TEXTILE SHACKLE



7. CALCULATION OF LUFF ROPE AND INSTALLATION RESTRICTIONS:

Please refer to separate Facnor AsymFX technical sheets.